

# CHRISTELLA CARPET



**Family Friendly**



**Durable**



**15 Year Residential Warranty\***

\*Please see full warranty terms and conditions at [www.flooringextra.com.au](http://www.flooringextra.com.au)

Willow

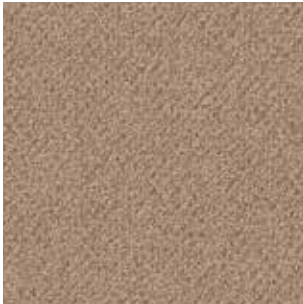
**t: 1300 FLOORX**

[www.flooringextra.com.au](http://www.flooringextra.com.au)

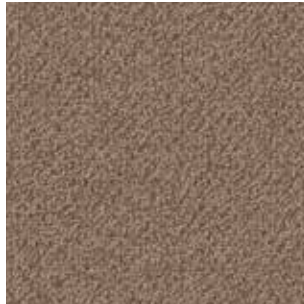
**FLOORING XTRA**

Christella is perfect for those who love the subtle finish of a twist pile but without the footprints. This fine gauge SDN loop pile provides durability with subtle highlights creating an elegant look on your floor.

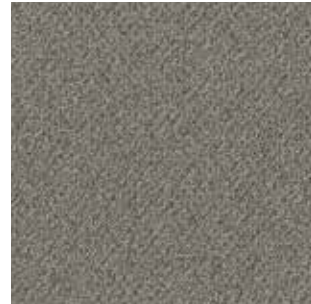
oxley



**Barnsley**  
1955



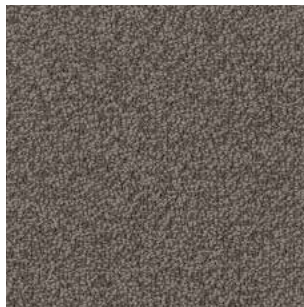
**Cloverleaf**  
1597



**Foxtail**  
2173



**Maidenhair**  
1953



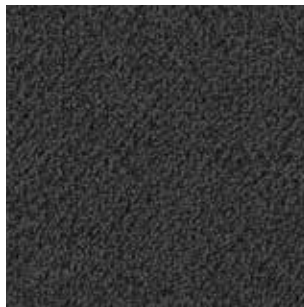
**Osmund**  
1956



**Paprat**  
1958



**Staghorn**  
1952



**Willow**  
1960

## TECHNICAL SPECIFICATIONS

Weight	30oz
Gauge	1/10g
Total Thickness	8.0mm
Fibre	Solution Dyed Nylon
Construction	Textured Loop Pile
Width	3.66 metres
Grading	REHDS
Rating	6 Star (ACCS)
Warranties	15 Year Residential Wear Warranty* 15 Year Stain and Fade Resistance Warranty Lifetime Insect Deterrent Warranty Lifetime Anti-Static Guarantee

Price Guide      \$\$

\*Please see full warranty terms and conditions at [www.flooringxtra.com.au](http://www.flooringxtra.com.au)



Warm  
Underfoot



15 Year Residential  
Warranty



Stair Rated



Easy To Maintain